

**SKODA**



**Karoq**

**Style | Sportline 4x4**

**7 YEAR**  
**WARRANTY\***  
**UNLIMITED KM**

^Conditions and exclusions apply, see <https://www.skoda.com.au/owners/warranty>. Your rights under this warranty are provided in addition to, and in some cases overlap with, consumer guarantees under Australian Consumer Law and do not limit or replace them.



Style

#### **When You Know What Fits You**

You never know what might be around the next bend, but in the Škoda Karoq Style, you'll be more than ready for it. That's because it's packed with state-of-the-art tech and safety systems. Beautiful to look at and even more beautiful to drive, Karoq Style is the embodiment of our design philosophy. This compact SUV's game for any adventure. Karoq Style can take you from weekday to weekend in head-turning style. But the real question is, where will you take it?

That's Simply Clever. That's Škoda.

## Exterior Design

### A Landmark on any Road

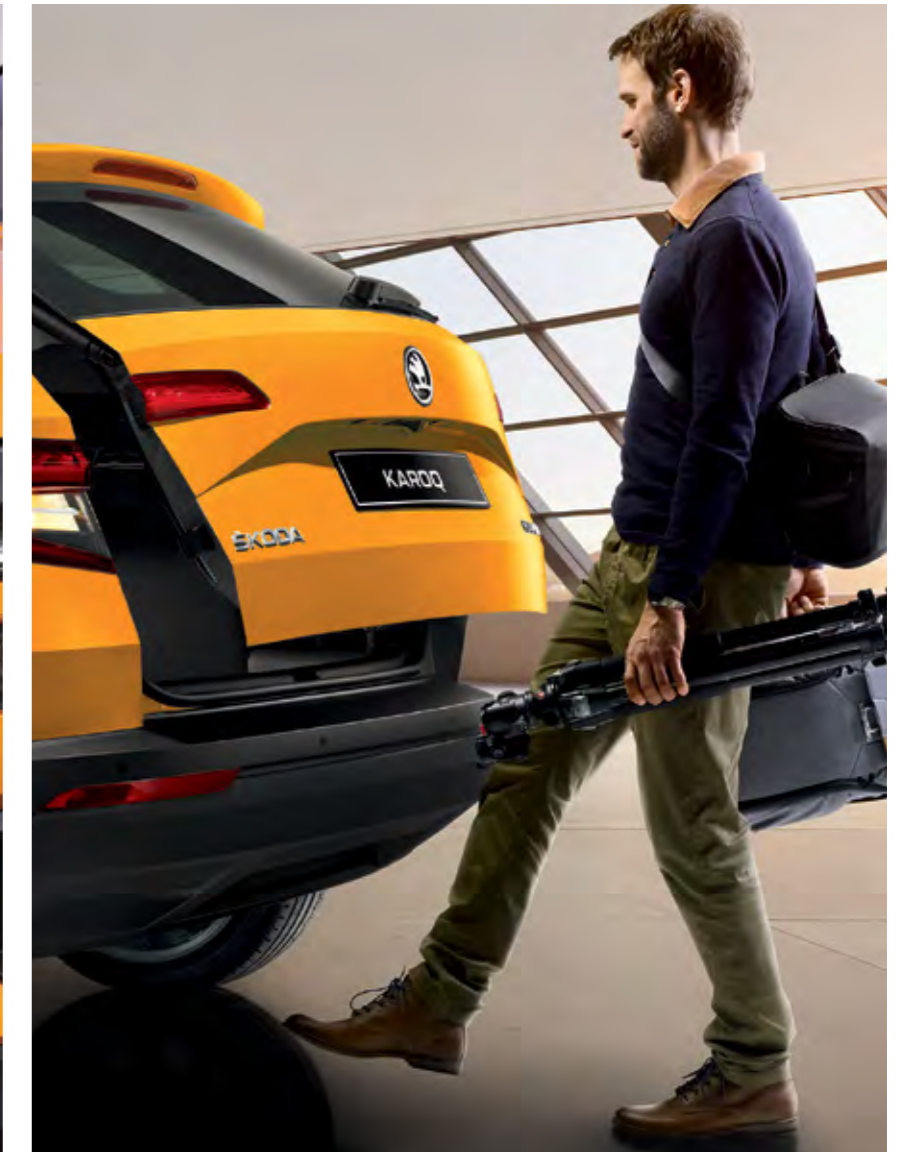
With its robust body with protective features and higher ground clearance, the Karoq invites you to venture off the beaten track. At the same time, its compact dimensions, sleek lines, and stylish wheels accentuate the car's ambition to be a great urban SUV.



#### Full LED matrix headlights

The newly shaped Karoq headlights are available in two types in terms of functionality. Equipped with LED lights, both types offer high performance and high energy efficiency. The top-end option comes with full LED Matrix headlights, giving the driver maximum light power without dazzling other road users.

The Matrix LED Headlights are optional (part of Tech Pack / Premium Pack)



#### Virtual pedal

Now this is virtually magic, swipe your foot underneath the boot and, hey presto, it opens or closes automatically.



### Top full LED tail lights

The tail lights, have also been innovated both in terms of shape and technology. Fitted with animated turn indicators, they significantly improve the visibility of your car for other drivers. In addition (depending on surrounding light intensity), when you lock and unlock your car, the welcome effect activates the animation feature.



### Rear view

With the unmistakable Škoda Inscription in the back, the car proudly declares its family. The distinctive wedged - shaped rear lights, also with the familiar C shaped illumination, references the Czech crystal glass - making tradition. The Karoq Style also features a robust protective cover.

### SUV signature

The new Karoq evokes a sense of strength and security greatly enhanced with a newly shaped robust rear bumper with black diffuser. The new Karoq features an extended roof spoiler which underlines the car's distinctive appearance while improving its aerodynamics. With its higher ground clearance, the vehicle can travel off the tarmac regardless of the type of drive selected.

## Interior Design

### A Universe that Revolves Around You

The Karoq Style's interior was designed around one thing and one thing only - you. The love child of smart and style, it's packed with intuitive tech. The interior has everything you need - and it's all right in front of you.



Karoq Style shown with Optional Premium Pack.

## Infotainment

Karoq is packed with the technology options that can make everyday journeys easier and more enjoyable. Smart inside means that it can seamlessly sync with your external devices. Better still, your kids will never get bored on a journey.



### Columbus

The Columbus navigation system features a 9.2" display and 3D view. The device offers not only comfortable touch control, but also gesture control, which uses the proximity sensor to let the touchscreen know when a hand is moving toward it, bringing up the menu. The Columbus navigation also comes standard with features such as Bluetooth® and SmartLink smartphone connectivity. Available in Optional Packages on Style and Sportline 4 x 4 at extra cost.

## Access Mission Control for any Mission

We've turned the car into a cockpit. The beautiful, yet practical digital display takes all the information you need and puts it where you need it most - right in front of your eyes.



### 10" Virtual Cockpit

The Virtual Cockpit displays onboard computer specifications in combination with other information, such as navigation. You can choose from five layouts (classic view shown) controlled via the View button on the steering wheel.

## Wireless Connectivity

Karoq featuring wireless apple car play and android auto.



Combining our smart car with your smart phone was always going to be a good idea. Wireless Apply CarPlay seamlessly connects compatible apps from your smart phone to your Karoq. So, whether you want to listen to music or receive turn by turn directions.

Karoq featuring wireless Apple Car Play & Wireless Android Auto is compatible for selected apps with the latest smartphone versions of IOS active data service required optional connection cable sold (separately).

## Simply Clever Škoda's Little Helpers

Life is easier when the equipment is practical. The new Karoq offers plenty of smart storage space and other helpful details that make everyday journeys more enjoyable.



### Driver's storage box

The driver can utilise a practical tilting storage compartment located directly below the steering wheel.



### Phone box

The phone box, also suitable for large display devices, creates an amplified signal for your mobile phone and, at the same time, wirelessly charges your device while driving. Two USB-C data ports located above the phone box allow you to easily connect and pair your external devices with the infotainment system.



### Liquid reservoir

You will never spill a single drop when refilling the washer fluid. The liquid reservoir is not only easily accessible but also has an integrated funnel.



### Glove compartment

The closed storage compartment is located in the lower part of the dashboard by the front passenger.



### Reflective vests / rubber strap

The vests can be stored in the compartments in the front and rear doors, ensuring they are always within reach. In the front compartments, the items can also be fastened with a rubber strap.

## Comfort and Space

### Comfort is your Co-Driver

Indulge yourself even when driving. Modern technologies, remarkable roominess, and a host of practical details will turn your everyday journey into a luxury trip.



#### Welcome logo

The LEDs on the front doors' underside, projecting the Škoda inscription, illuminate the entry area.

Available in optional packs on Style.



#### Electrically adjustable front seats with memory function

The electrically-adjustable driver seat with built-in memory can store three different seat settings.

Available in optional packs on Style.



#### Rear armrest

When the middle rear seat is not occupied, the armrest with drink holders can be folded down.

Karoq Style shown with Optional Premium Pack available at extra cost.



#### Adaptive cruise control

The driver's comfort during long motorway journeys is enhanced by the Adaptive Cruise Control, which operates up to speeds of 210 km/h.

Safety technologies are designed to assist the driver, but should not be used as a substitute for safe driving practices.



#### Jumbo box

The spacious Jumbo Box storage compartment is housed in the front armrest. You can, for example, store your electronic items safely inside. The Jumbo Box can also be equipped with a coin holder and two drink holders with Easy Open function.

Karoq Style is shown with Optional Premium Pack available at extra cost.



## KESY

You will quickly get used to the convenience of KESY (the Keyless Entry, Start and exit system), which allows you to lock/unlock your car and start the ignition/switch off the engine without inserting the key.



## Fold it. Move it. Remove it

The VarioFlex rear seating system allows you to customise the interior according to your current situation. It is comprised of three separate rear seats. You can fold each one down independently, as well as remove them completely.



### Double-sided carpet

You can use the carpet with the elegant fabric side up when not transporting anything that might make dirty, and easily turn it over to utilise the washable rubber side when required.



### Net programme

The practical nets reliably prevent your things from moving around. Plus, you can clearly see where you have put everything.



### Varioflex – all seats folded down

The luggage compartment, with a basic volume of 588 litres, can be extended up to 1,605 litres by folding the rear seat backrests down.



### Varioflex – all seats removed

If you completely remove the rear seats, you gain a luggage area with a capacity of 1,810 litres.



### Varioflex options

To enlarge the luggage area, you can tilt all the rear seats towards the front seats (see the left seat). This position also allows you to remove them easily. This can be done single-handedly and does not require the use of any tools.

## Perform on any Stage

All the engines on offer have many things in common. They are powerful, economical, and meet strict emission standards. This makes the Karoq feel as much at home in the city as it is in the wild.



### Dynamic chassis control

Enjoy the high performance of your car in maximum comfort and safety. The Dynamic Chassis Control (DCC) continuously evaluates and responds to various driving situations (braking, acceleration, turning), adapting the damping and steering characteristics. As part of the infotainment menu, it allows you to select one of three modes according to your specific requirements: Comfort, Normal or Sport.

Only available in Sportline 4x4 overseas model of Style variant shown for image purposes.

The turbo engine offers a triple threat of modern dynamic and economical.

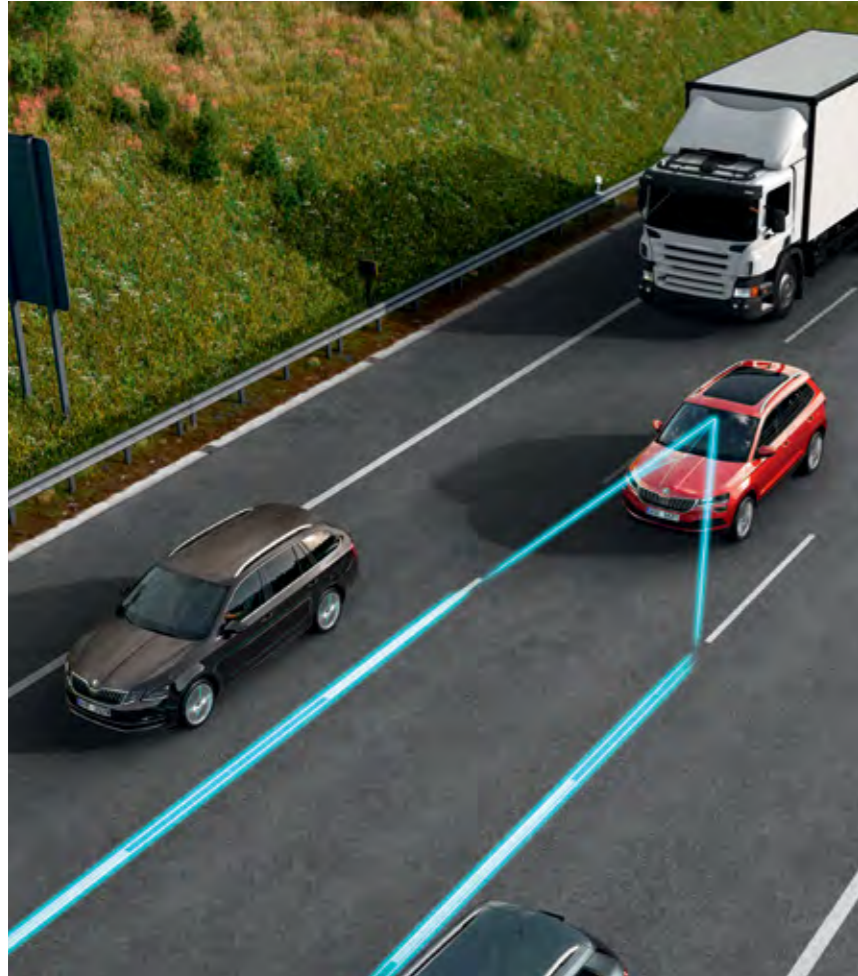


### Turbocharged engines

The Karoq offers 110kW (Style) and 140kW (Sportline 4x4) turbocharged petrol engines that guarantee excellent performance and acceleration, complemented by low fuel consumption.

# Safety

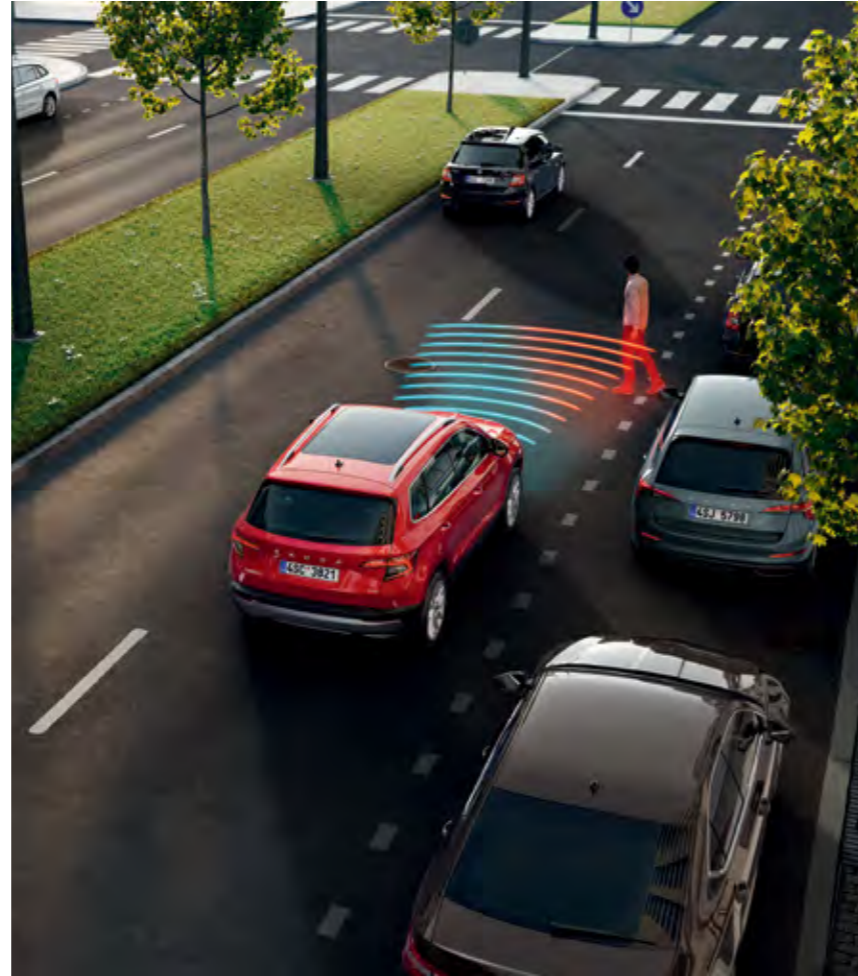
## Protect your Precious Cargo



### Lane Assist with Adaptive Lane Guidance<sup>1</sup>

The system is capable of keeping the car in the middle of the correct lane and of alerting the driver in case of deviation.

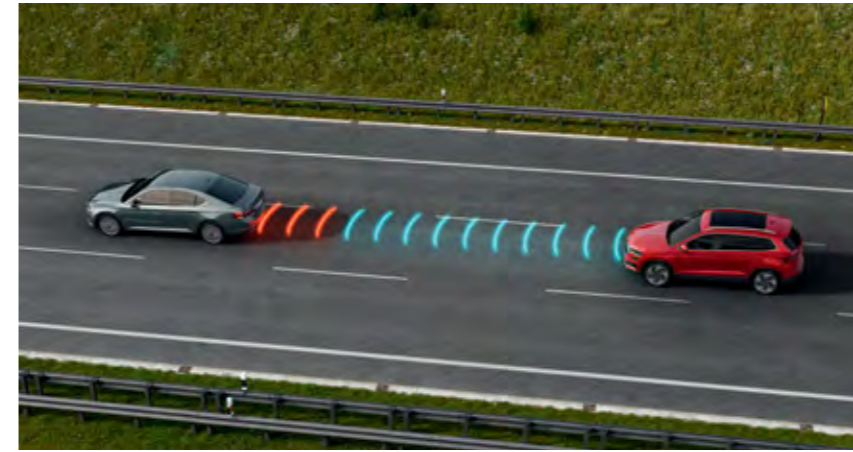
Adaptive Lane Guidance is available in optional packages on Style and Sportline 4x4 at an extra cost.  
<sup>1</sup> Safety technologies are designed to assist the driver, but should not be used as a substitute for safe driving practices. Overseas Model shown for illustrative purposes only.



### Front Assist with City Emergency Brake<sup>1</sup>

The Front Assist system, using a radar device in the front grille, is designed to monitor the distance from the vehicle ahead, including emergency braking function.

<sup>1</sup> Safety technologies are designed to assist the driver, but should not be used as a substitute for safe driving practices. Overseas Model shown for illustrative purposes only.



### Adaptive Cruise Control<sup>1</sup>

Never get too close for comfort. This system maintains a safe distance from vehicles in front of you, in addition to its basic cruise control function.



### Manoeuvre Assist<sup>1</sup>

Using the sensors of the Park Assist, this system offers protection from obstacles within driving distance of the car (at speeds of up to 8 km/h). If an obstacle is detected, based on the distance from the obstacle and the car's speed, the system engages the emergency braking.

<sup>1</sup> Safety technologies are designed to assist the driver, but should not be used as a substitute for safe driving practices. Overseas Model shown for illustrative purposes only.



### Side Assist - Blind Spot Detection<sup>1</sup>

Using radar sensors in the rear bumper, Side Assist (which can detect other vehicles and harder to see objects like cyclists up to 70m away) monitors the areas behind and beside your car. Based on the distance and speed of the surrounding vehicles, it decides whether or not it should warn the driver.



### Crew Protect Assist<sup>1</sup>

This assistance system provides increased protection for front-seat passengers in critical situations that could lead to a crash by closing the side windows to leave only a 5 cm gap, shutting the roof window, and tightening seatbelts. The new state-of-the-art version of the system can use radar sensors both in front and in the rear.



### Emergency Assist<sup>1</sup>

Emergency Assist reduces the risk of an incident in the event of the driver's sudden health collapse, for example, by safely stopping the car and turning on the warning lights.

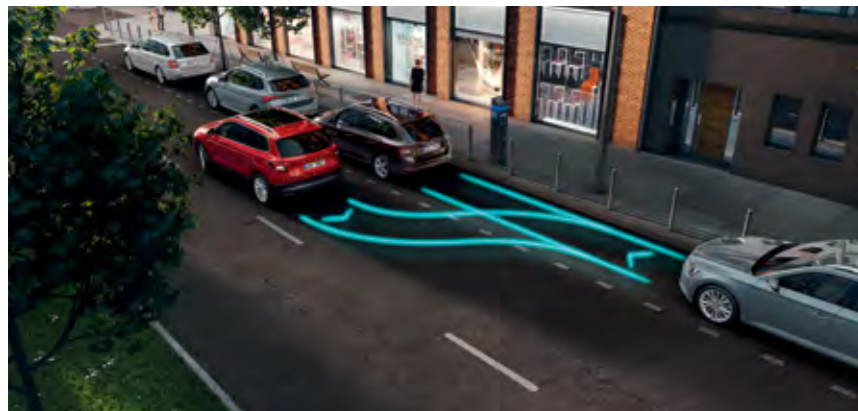
Available in Optional Packages on Style and Sportline 4x4 at extra cost.



### Traffic Jam Assist<sup>1</sup>

This function is designed to facilitate driving in traffic jams. By controlling the engine, brakes, and steering, it makes the vehicle pull away, brake, and turn to copy the movement of the surrounding vehicles (at speeds of up to 60km/h). If lanes are not detected at speeds of up to 30km/h, or only one lane (line) is detected at speeds of up to 60km/h, the Follow Drive system follows the trajectory of the vehicle in front of you until lane markings are available again.

Available in Optional Packages on Style and Sportline 4x4 at extra cost.



### Park Assist<sup>1</sup>

Minimise the hassle of parking in tight spots with Park Assist. It automatically selects an appropriate parking place in a row of parallel or perpendicularly parked vehicles.

Available in Optional Packages on Style and Sportline 4x4 at extra cost.



### Matrix Beam Function

The full LED Matrix headlights feature matrix beam function. This allows you to use the high beams continuously, without blinding other drivers. Using a windscreen camera, the matrix beam function responds to the traffic situation and turns off only some segments of the light. Other segments are turned on and illuminate the road. In addition, thanks to this function, you are not blinded by reflective materials on traffic signs, for example. The matrix beam function also uses information from the navigation system, so the high beams will only turn on when you are out of a built-up area.

Available in Optional Packages only on Style at extra cost.

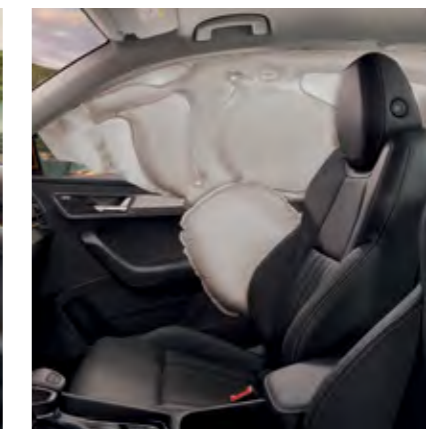
## Seven Airbags A Feature we Hope you will Never See

In extreme situations, where the driver cannot actively influence the outcome, the car's passive safety elements take over – like the airbags. You can equip your car with up to nine of them.



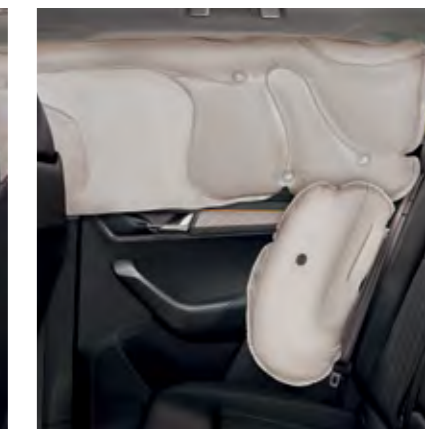
### Front driver and passenger airbags

While the driver airbag is enclosed in the steering wheel, the passenger airbag is located in the dashboard. If needed, this can be deactivated when a child seat is installed on the front seat.



### Head airbags

Upon activation, head airbags create a wall protecting the front and rear occupants against head injury.



### Knee airbag

This airbag, which is located under the steering wheel column, protects the driver's knees and shins.



### Front and rear side airbags

These airbags (shown together with the activated head airbag) protect the pelvis and chest of the driver and other passengers in the event of a side collision.

Overseas model shown, local specifications may vary.

<sup>1</sup> Safety technologies are designed to assist the driver, but should not be used as a substitute for safe driving practices. Overseas Model shown for illustrative purposes only.



Sportline  
4x4

## For the Sport Called Life

They say there is no rest for the restless. But the new Sportline 4x4 is certainly a comfortable way to unleash your active ambitions. And with the 2.0 TSI/140 kW engine, driving to your favourite outdoor activity will be as exhilarating as the sport itself.



### Style and functionality

The bumpers in the Sportline design are accompanied by black exterior elements, such as front grille frame, external side-view mirror caps, window frames, and roof railings. The dynamic appearance of the car is further enhanced by the extended roof spoiler, inscriptions in black on the 5th door (such as Škoda, the model name), black rear diffuser with 19" VEGA alloy wheels, black. In addition, the full LED Matrix headlights come as standard.



## Sportline

The standard equipment of the Karoq Sportline includes external side-view mirror caps in black and door handles in body colour, spoiler in body colour (rear cover), full LED Matrix headlights with All Weather Lights function, full LED tail lights with dynamic turn indicators and welcome effect, multifunctional camera, 3-spoke multifunctional sports steering wheel in perforated leather, silver stitching (steering wheel and front armrest), LED ambient lighting, pedal covers in alloy look, door sill strips, plus more.



### Front sports seats

The front sports seats provide maximum comfort even during a dynamic drive. Thanks to the specific fabric upholstery with ThermoFlux function, which ensures more breathability, the passengers can enjoy maximum comfort in all climatic conditions.

### Sports steering wheel

Your driving pleasure is enhanced by the multifunctional 3-spoke sports steering wheel in perforated leather, with silver stitching and an original Sportline plaquette. The Virtual Cockpit, which can display onboard computer specifications in combination with other information, offers five layouts with specific graphics controlled via the View button on the steering wheel. In addition, the Sportline version features special graphics for Sport View (shown).

## Sport Mode is Always On

The dynamic exterior is perfectly matched by an equally impressive black interior that combines sporty style and elegance. It includes, among other things, front sports seats, a sports steering wheel with Sportline plaquette, upholstery with ThermoFlux function, distinctive décor, LED ambient lighting, and much more.



### Sportline black interior

Piano Black/Carbon décor  
Fabric upholstery with ThermoFlux function, black ceiling

Overseas model shown local specifications may vary.

## Wheels & Upholstery

18" PROCYON Aero Silver + anthracite inserts (Style)



19" VEGA alloy wheels, black (Sportline 4x4)



Style Black (fabric)



Style Leather Black<sup>3</sup>  
(leather/  
leatherette)

Sport Seats with Thermoflux (Sportline 4x4)



Style Leather Beige<sup>3</sup>  
(leather/  
leatherette)

<sup>3</sup> Leather appointed seats have a combination of genuine and artificial leather, but are not wholly leather.

## Style Colours



Graphite Grey Metallic



Magic Black Metallic



Moon White Metallic



Energy Blue



Phoenix Orange Metallic



Brilliant Silver Metallic

## Sportline 4x4 Colours



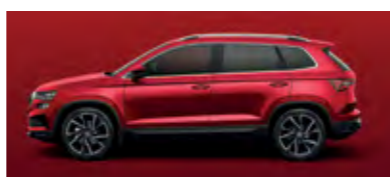
Steel Grey



Graphite Grey Metallic



Magic Black Metallic



Magic Black Metallic



Phoenix Orange Premium



Moon White Metallic



Brilliant Silver Metallic

Please note that Metallic, Pearl and Premium Effect paint are optional at extra cost. The print process does not allow for exact reproduction of the exterior or the upholstery colours. Please contact your Škoda Partner for further information on colours and upholstery combinations.

### Karoq model equipment

#### Wheels and tyres

	Style	Sportline 4x4
Wheel type	Alloy - Procyon, anthracite (covers)	Alloy - Vega (black)
Wheel dimensions	18 x 7J	19 x 8J
Tyre dimensions	215/50 R18	225/45 R19
Spare wheel type	Space saver	Space saver

#### Driving dynamics

Drive Mode Selection incl. ECO function	●	●
Dynamic Chassis Control (DCC) including drive mode selection	—	P

#### Active safety

Anti-lock Braking System (ABS)	●	●
Anti-Slip Regulation (ASR)	●	●
Cross differential system (XDS+)	●	●
Electronic Brakeforce Distribution (EBD)	●	●
Electronic Differential Lock (EDL)	●	●
Electronic Stability Control (ESC)	●	●
Hill Hold Control (HHC)	●	●
Hydraulic Brake Assist (HBA)	●	●
Multi-Collision Brake (MKB) <sup>1</sup>	●	●
Rain Brake Support (RBS)	●	●
<b>Škoda driver-assistance systems</b>		
Adaptive Cruise Control <sup>1</sup>	●	●
Driver Fatigue Detection <sup>1</sup>	●	●
Emergency Assist <sup>1</sup>	P	P
Front Assist - City/Pedestrian <sup>1</sup>	●	●
Lane Assist <sup>1</sup>	●	●
Lane Assist with Adaptive Lane Guidance <sup>1</sup>	P	P
Park Assist <sup>1</sup>	P	P
Side Assist with Rear Traffic Alert <sup>1</sup>	●	●
Traffic Jam Assist <sup>1</sup>	P	P
<b>Other active safety features</b>		
Parking sensors - front & rear	●	●
Rear view camera	●	●
Speed limiter	●	●
Tyre Pressure Monitoring	●	●

#### Passive safety

<b>Airbags</b>		
Front airbags - driver & front passenger	●	●
Knee airbag - driver	●	●
Side (thorax) airbags - front	●	●
Side curtain airbags - front and rear	●	●
<b>Seatbelts</b>		
Seat belt reminder - front & rear seatbelts	●	●
<b>Child restraints</b>		
ISOFIX child restraint anchors in outer rear seats	●	●
Top tether child restraint anchors (rear) - 3 anchors	●	●

● Standard ○ Option — Not offered P Available in optional package

<sup>1</sup> Safety technologies are designed to assist the driver, but should not be used as a substitute for safe driving practices.



Karoq model equipment	Style	Sportline 4x4
<b>Security</b>		
Alarm system with interior monitoring and towing protection	●	●
<b>Exterior highlights</b>		
Black window frame surrounds	—	●
Chrome plated window frame surrounds	●	—
Gloss black treatment - rear diffuser, exterior mirrors and front grille	—	●
Rear Škoda nameplate and badging in gloss black	—	●
Roof Rails in silver	●	—
Roof Rails in gloss black	—	●
Spoiler in body colour, tailgate mounted	●	●
Virtual Pedal (rear power tailgate with hands-free opening)	●	●
<b>External mirrors</b>		
Electrically adjustable	●	●
Heated	●	●
Power folding	●	●
Auto dimming	●	●
Memory	P	P
Tilt on reverse (passenger's side)	P	P
<b>Interior highlights</b>		
Aluminium finish pedals	—	●
Black headlining and pillar trim	—	●
Front door sill trims with aluminium inlays	●	●
<b>Internal rear-view mirror</b>		
Auto dimming function	●	●
<b>Connectivity, sight and sound</b>		
8" Bolero infotainment system with touch screen	●	●
9.2" Columbus infotainment system with touch screen and satellite navigation	P	P
Audio system - 8 speakers	●	●
Wireless Apple CarPlay & Android Auto connectivity <sup>2</sup>	●	●
Bluetooth connectivity (phone and audio)	●	●
Digital radio (DAB+)	●	●
10.25" Virtual cockpit digital cluster	●	●
Wireless charging pad	●	●
12V outlet in rear	●	●
USB-C outlet - 2x (2 x front)	●	●

● Standard — Not offered P Available in optional package

<sup>2</sup> SmartLink is compatible for selected apps with the latest smartphone versions of iOS and Android.

<sup>+</sup> Karoq featuring wireless Apple CarPlay® and wireless Android Auto™ is compatible with the latest versions of iOS and Android, active data service required, optional connection cable (sold separately).

Karoq model equipment	Style	Sportline 4x4
<b>Comfort and convenience</b>		
<b>Seating</b>		
Comfort front seats	●	—
Sports comfort front seats with side bolsters and integrated headrest	—	●
Height adjustable front seats with lumbar support (manual adjustment)	●	●
Power adjustable front seats with lumbar and memory functions	P	—
Heated front and rear seats	P	P
Front centre console armrest with lower storage compartment	●	●
Rear seat centre fold down armrest	●	●
"VARIOFLEX" rear folding seats	●	—
<b>Steering wheel</b>		
3 spoke flat-bottom leather appointed steering wheel	●	●
Audio, virtual cockpit and driver assistance controls	●	●
Gear shift paddles	P	●
Height and reach adjustable steering wheel	●	●
<b>Upholstery</b>		
Fabric upholstery	●	—
Fabric upholstery with silver contrast stitching	—	●
Leather appointed upholstery <sup>3</sup>	P	P
Carpet floor mats - front and rear	●	●
Double-sided floor mat (carpet and rubber) - luggage compartment	●	●
<b>Windows</b>		
Panoramic glass sunroof - dual panel with tilt and slide front panel and power sunblind	○	○
Power windows with one touch up/down function	●	●
Privacy glass	●	●
<b>Driving convenience</b>		
Convenience key, full keyless entry and start with Safe system	●	●
Electro-mechanical Parking Brake (EPB)	●	—
Electro-mechanical Parking Brake (EPB) (with auto hold function)	—	●
Rain sensing wipers	●	●
<b>Heating and ventilation</b>		
Dual-zone Climatronic air-conditioning with humidity sensor	●	●
<b>Lighting</b>		
<b>Exterior lighting</b>		
LED Daytime Running Lights	●	●
Front fog lights	●	—
Cornering function and poor weather light function	P	●
LED rear fog lights	●	●
LED headlights	●	—
Matrix LED headlights (low/high beam) with Adaptive Front-light System (AFS)	P	●
LED Puddle lights in front doors with Škoda logo illumination	P	●
LED rear tail lights with dynamic indicator	●	●
Light assist function (coming/leaving home, dusk)	●	●

● Standard ○ Option — Not offered P Available in optional package

<sup>3</sup> Leather appointed seat upholstery have a combination of genuine and artificial leather, but are not wholly leather.

Karoq model equipment	Style	Sportline 4x4
<b>Lighting cont.</b>		
<b>Interior lighting</b>		
LED ambient lighting with customisable colours - dashboard, door panels and foot wells (non-customisable)	P	●
Interior lighting - front and rear reading lights, vanity mirrors and cargo area	●	—
LED interior lighting - front and rear reading lights, vanity mirrors and cargo area	P	●
<b>Storage</b>		
Bottle holders in front and rear door pockets	●	●
Cup holders in front (centre console) and rear (centre armrest)	●	●
Front seat backrest storage pockets	●	—
Luggage compartment shopping hooks	●	●
Luggage net system	●	●
Cargo cover (retractable only on Style)	●	●
Retractable sunglasses compartment (not available with sunroof)	●	●
VarioFlex 40:20:40 split folding rear seat	●	—
Split folding rear seat (60/40)	—	●
<b>Smart features</b>		
Rubbish bin in door panel	●	●
Cargo elements (cargo fasteners)	●	●
Ticket holder - 'a' pillar	●	●
Windscreen washer reservoir with integrated funnel	●	●
<b>Optional Extra</b>		
Panoramic glass sunroof - dual panel with tilt and slide front panel and power sunblind	○	○

Karoq optional packages	Style	Sportline 4x4
<b>Tech pack<sup>1</sup></b>		
9.2" Columbus Satellite Navigation with Gesture control	○	—
Full Matrix LED headlights with dynamic headlight range control and cornering light	○	—
Park Assist	○	—
Lane Assist with Adaptive Lane Guidance	○	—
Surround Area View Camera	○	—
Traffic Jam Assist	○	—
Emergency Assist	○	—
Ambient Lighting	○	—

● Standard ○ Option — Not offered P Available in optional package

<sup>1</sup> Safety technologies are designed to assist the driver, but should not be used as a substitute for safe driving practices.

<sup>3</sup> Leather appointed seat upholstery have a combination of genuine and artificial leather, but are not wholly leather.

Karoq optional packages	Style	Sportline 4x4
<b>Premium pack<sup>1</sup></b>		
Leather Appointed Seat Upholstery (Black or Ivory)	○	—
9.2" Columbus Satellite Navigation with Gesture control	○	—
Full Matrix LED headlights with dynamic headlight range control and cornering light	○	—
Electric Front Seats with Memory Function and lumbar support	○	—
Automatic Parking Assist	○	—
Front & rear heated seats	○	—
Lane Assist with Adaptive Lane Guidance	○	—
Surround Area View Camera	○	—
Traffic Jam Assist	○	—
Emergency Assist	○	—
Automatically Foldable Door Mirrors with Auto Dimming and Memory Function	○	—
Ambient Lighting	○	—
Heat Insulating windshield	○	—
Three spoke multifunction leather steering wheel, heated	○	—
DSG paddles	○	—
Headlight Washers	○	—
<b>Leather seats pack<sup>1</sup></b>		
Leather Appointed Seat Upholstery (Black or Ivory)	○	—
Electric Front Seats with Memory Function and lumbar support	○	—
Automatically Foldable Door Mirrors with Auto Dimming, Memory and Tilt Function	○	—
Ambient Lighting	○	—
LED reading lights in front & rear	○	—
Interior footwell lighting in front & rear	○	—
Comfort leather seats in front	—	○
Electric Front Seats with Memory Function and lumbar support	—	○
Automatically Foldable Door Mirrors with Auto Dimming, Memory and Tilt Function	—	○
<b>Premium pack<sup>1</sup></b>		
9.2" Columbus Satellite Navigation with Gesture control	—	○
Adaptive chassis control with Drive profile selection <sup>1</sup>	—	○
Park Assist	—	○
Front & rear heated seats	—	○
Lane Assist with Adaptive Lane Guidance	—	○
Area View Camera	—	○
Traffic Jam Assist	—	○
Emergency Assist	—	○
Heat Insulating windshield	—	○
Headlight Washers	—	○
Three spoke multifunction leather steering wheel with DSG paddles, heated	—	○

○ Option — Not offered

<sup>1</sup> Safety technologies are designed to assist the driver, but should not be used as a substitute for safe driving practices.

<sup>3</sup> Leather appointed seat upholstery have a combination of genuine and artificial leather, but are not wholly leather.

Karoq technical specifications	Style	Sportline 4x4
<b>Engine</b>	4 cylinder in-line turbocharged direct injection with engine Start/Stop system*	4 cylinder in-line turbocharged direct injection with engine Start/Stop system*
Installation	Front Transverse	Front Transverse
Cubic capacity (litres/cc)	1.4/1395	2.0/1984
Bore/stroke (mm)	74.5/80	82.5/92.8
Max. power (kW @ RPM)	110 @ 6000	140 @ 6000
Max. torque (Nm @ RPM)	250 @ 1500 - 3500	320 @ 1500 - 4100
Compression ratio	10.0:1	12.2:1
Fuel type (recommended)	Premium unleaded (95 RON minimum)	Premium unleaded (95 RON minimum)
Emissions standard	Euro 6	Euro 6
<b>Drivetrain</b>		
Transmission	8 Speed Automatic	7 speed Direct Shift Gearbox (DSG)
Driven Wheels	Front wheel drive	Four wheel drive
<b>Performance<sup>‡</sup></b>		
0 – 100 km/h (seconds)	9.2	7
<b>Fuel consumption**</b>		
Combined (L/100km)	6.5	6.6
Urban (L/100km)	7.8	8.3
Extra Urban (L/100km)	5.5	5.7
CO2 emission (g/km)	147	152
Fuel tank capacity (L)	50	55
<b>Brakes</b>		
Front	Ventilated disc	Ventilated disc
Rear	Solid disc	Solid disc
System	Hydraulic diagonal dual-circuit braking system, vaccum servo assisted	Hydraulic diagonal dual-circuit braking system, vaccum servo assisted
<b>Steering</b>		
Type	Direct rack and pinion steering with electro-mechanic power steering	Direct rack and pinion steering with electro-mechanic power steering
Turning Circle (m)	10.2	10.2
<b>Suspension</b>		
Front	MacPherson strut with lower triangular links and torsion stabiliser	MacPherson strut with lower triangular links and torsion stabiliser
Rear	Compound link crank-axle	Multi element axle with one longitudinal and three transverse links with torsion stabiliser
<b>Weight<sup>‡</sup></b>		
Tare Mass (kg)	1510	1655
Roof load limit (kg)	75	75

‡Please note figures are sourced from overseas data where equipment levels by model variant may vary.

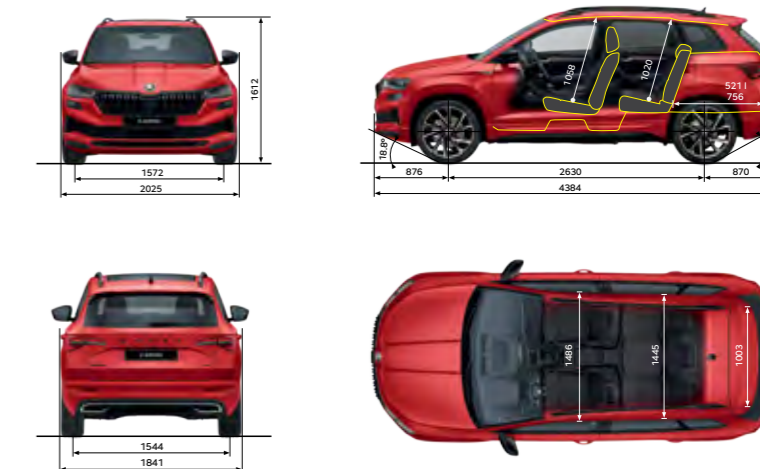
\*\*Fuel consumption figures according to Australia Design Rule (ADR) 81/02 derived from laboratory testing. Factors including but not limited to driving style, road and traffic conditions, environmental influences, vehicle condition, and accessories fitted, will in practice in the real world lead to figures, which generally differ, from those advertised. Advertised figures are meant for comparison amongst vehicles only.

Karoq technical specifications	Style	Sportline 4x4
<b>Towing capacity</b>		
Braked (kg)	1500	1900
Unbraked (kg)	750	750
Maximum downball weight (kg)	90	90
<b>Dimensions</b>		
<b>Exterior</b>		
Length (mm)	4390	4384
Width (mm)	1841	1841
Height (mm)	1603	1612
Wheelbase (mm)	2638	2630
Wheel track front / rear (mm)	1576 / 1541	1572 / 1544
Ground clearance (mm)	164	173
<b>Interior</b>		
Elbow width front / rear (mm)	1486 / 1445	1486 / 1445
Head room front / rear (mm)	1058 / 993	1058 / 1020
Luggage capacity, rear seats up (L) (VDA)	588	521
Luggage capacity, rear seats down (L) (VDA)	1810	1630

#### Style dimensions (with Varioflex)



#### Sportline 4x4 dimensions



\*The capacity depends on the position of the backrests and rear seats. Overseas Model shown for illustrative purposes only.

## Welcome to Care-Free Ownership

Škoda Care is about making sure that same level of attention to detail remains long after you've made your purchase, making owning a Škoda as fantastic as buying one.



# 7 YEAR WARRANTY<sup>^</sup> UNLIMITED KM

After getting behind the wheel of a Škoda, it's not hard to see why they're so beloved by their owners. Quite simply, Škoda vehicles are made to be driven and we want to keep your journey a long and happy one. And the way it works is simple. Škoda Australia provides a 7 Year/Unlimited Kilometre Warranty<sup>^</sup> on all new vehicles. Every new Škoda vehicle includes one year Škoda Assist<sup>±</sup> (Roadside Assistance), from the warranty start date. To thank you for your loyalty, complimentary Service Initiated Roadside Assistance (SIRA for short) will be activated if the vehicle is returned to an authorised Škoda Dealer for scheduled service, as per the Škoda Service Schedule milestones. For more information and eligibility, please visit [www.skoda.com.au/owners/roadside-assistance](http://www.skoda.com.au/owners/roadside-assistance)



Škoda Service Pricing

No hidden expenses, no nasty surprises. Škoda Service Pricing applies to the first 6 scheduled services for your Škoda, occurring every 12 months/15,000 km (whichever occurs first).\*



Genuine Parts

You don't have to be a genius (AKA a Škoda technician) to know that non-genuine parts aren't as good as using genuine ones. Our philosophy towards fixing your car is simple; the parts we use are identical to the parts used in the production of your car originally. Genuinely. And with a nationwide, two year, unlimited kilometre warranty<sup>^</sup> on all genuine parts, peace of mind comes easily too.



Service Packs

Why worry about handling payment of your services on an ad-hoc basis when you already know you need to get them annually? Conveniently, you can save time by pre-paying your servicing with a 7 Year/105,000km (whichever occurs first) or a 5 year/75,000kms (whichever occurs first) Škoda Service Pack at any of our Škoda dealers. That way you can simply book a service time that suits you, and the costs are already covered. your car, serviced at your convenience.

<sup>^</sup>Conditions and exclusions apply, see [www.skoda.com.au/owners/warranty](http://www.skoda.com.au/owners/warranty). Your rights under this warranty are provided in addition to, and in some cases overlap with, consumer guarantees under the Australian Consumer Law and do not limit or replace them. <sup>±</sup>Škoda Assist (Roadside Assistance) Conditions and exclusions apply, see <https://www.skoda.com.au/own/roadside-assistance>. \*Škoda Service Pricing is current as at the date the customer obtains a price from the Škoda Service Price Calculator or from a participating authorised Škoda Dealer and is subject to change without notice. Customers are advised to confirm current pricing on the Škoda Service Pricing Calculator or with an authorised Škoda Dealer on the day of each Scheduled Service. Škoda Service Pricing is available at participating Škoda dealers on Fabia, Yeti, Octavia, Rapid, Scala, Kamiq, Roomster, Superb, Karoq and Kodiaq models first sold by an authorised Škoda dealer on or after 1st July 2015. Škoda Service Pricing applies to the cost of standard items in each of the first 6 standard scheduled services of your vehicle which are scheduled to occur at every 15,000 km/12 month interval (whichever occurs first). Exclusions and conditions apply. For details on pricing, items not included in the Service Price and for full terms and conditions click here. Škoda Australia reserves the right to at any time modify or discontinue the Škoda Service Pricing program. <sup>^</sup>Please check your engine code in your service or owner manual (if you have already purchased the vehicle) or confirm your engine code with your Škoda dealer prior to vehicle purchase (if you have not yet purchased the vehicle). Škoda Service Packs are available from authorised Škoda Dealers or online from Škoda Australia official website, for all models and covers standard items as contained in each scheduled service interval only. The New Car Service Packs can only be purchased prior to the first scheduled service and up to 15,000 km/12 months (whichever occurs first). The timeframe takes effect from when the vehicle is first reported in our system as 'sold'. The Used Car Service Packs can be purchased after the first 15,000 km/12 months scheduled service. The Top-up Service packs can be purchased based on the eligibility criteria as detailed in the terms and conditions. Discount structure varies by model. For details of what is not included in a scheduled service, please refer to the program terms and conditions available here. #For more information and eligibility, please visit <https://www.skoda.com.au/promotions/promotion-detail/service-maintenance-subscription-plan>.

## Remove any Doubt with Škoda Choice.

Škoda Choice<sup>±</sup> is a flexible finance program that allows you to guarantee your vehicle's minimum future value<sup>±</sup> at the time of purchase, giving you peace of mind knowing the value of your Škoda is secured.

- ✓ Freedom to tailor your contract term and kilometre allowance to suit your lifestyle.
- ✓ Fixed interest rate for the life of your Loan with no account keeping fees.
- ✓ At the end of your Škoda Choice contract you can select from three simply clever options – trade-in, retain or return.
- ✓ Opportunity to upgrade your Škoda more often, enjoying the latest model with the best innovations and technology.

### How it works

#### Step 1

Choose your favourite Škoda model.

#### Step 2

Choose your preferred term\* of 12, 24, 36, 48 or 60 months, and an annual km allowance.

#### Step 3

At the end of your chosen term, select from one of the three end of term options:



#### Trade in

If you wish to trade-in your Škoda for a new vehicle, all you need to do is return it to the dealership. If the trade-in value is higher than the Guaranteed Future Value<sup>±</sup>, you can use this equity towards your new vehicle.



#### Retain

If you prefer to retain your Škoda, simply let us know. Provided that you also meet the relevant payment obligations under your contract, you can purchase your vehicle outright for the Guaranteed Future Value amount locked in at the start of the contract<sup>±</sup>. Then your Škoda is yours to keep. Or you can choose to refinance your balloon at the end of the term.



#### Return

All you need to do is hand your car back and, if the vehicle meets the agreed kilometre and fair wear and tear requirements<sup>±</sup>, you will have no more to pay.

For more information on our Guaranteed Future Value program, visit <https://www.skoda.com.au/finance/skoda-choice>

<sup>±</sup>Škoda Choice has a Guaranteed Future Value (GFV) which is the minimum value of your vehicle at the end of your finance contract as determined by Škoda Financial Services (SFS) ABN 20 097 071 460, Australian Credit Licence 389 344. If you decide to return your vehicle to SFS at the end of your term, SFS will pay you the agreed GFV, which will be put against your final payment subject to fair wear and tear conditions and agreed kilometres being met. At the end of your term, you can elect to (1) trade-in; (2) return; or (3) retain the vehicle by paying the GFV owed to SFS at the end of the loan term after all repayments have been made. You will be liable for any loan contract deficit and additional charges apply if you exceed the nominated kilometre allowance and/or the vehicle is not in an acceptable condition. Available on new, demonstrator and Certified Pre-owned Škoda vehicles. To see if this product is right for you, please see our Target Market Determination on our website and/or seek independent advice.

\*Subject to a credit assessment and SFS lending criteria. Fleet, government, rental and used car buyers, hire car and chauffeur companies excluded.



Publication date: December 2023  
Version: 3

**Important Information:**

Apple CarPlay® is a registered trade mark of Apple Inc. Android Auto™ is a registered trade mark of Google Inc. Bluetooth® is a registered trade mark of Bluetooth SIG Inc.

Škoda is distributed by Volkswagen Group Australia Pty Ltd (ABN 14 093 117 876) of 895 South Dowling Street, Zetland, NSW 2017. Specifications are planned as at December 2023, for Model Year 2024 and are subject to change without notice or obligation. All information in this brochure are correct at the time of publication, however variations may occur from time to time and Škoda, in so far as it is permitted by law to do so, shall not be liable in any way as a result of any reliance by any person on anything contained in this brochure. Authorised Škoda dealers will provide up-to-date information on model application, design feature, prices, and availability on request.

[www.skoda.com.au](http://www.skoda.com.au)



[@skodaaustralia](https://www.instagram.com/skodaaustralia)



[www.facebook.com/skodaaustralia](https://www.facebook.com/skodaaustralia)

**If you've enjoyed reading about it  
— Imagine driving it**

**Call us to arrange a test drive**

SKODABROMY24

Your Škoda partner:

**SKODA**

[skoda.com.au](http://skoda.com.au)